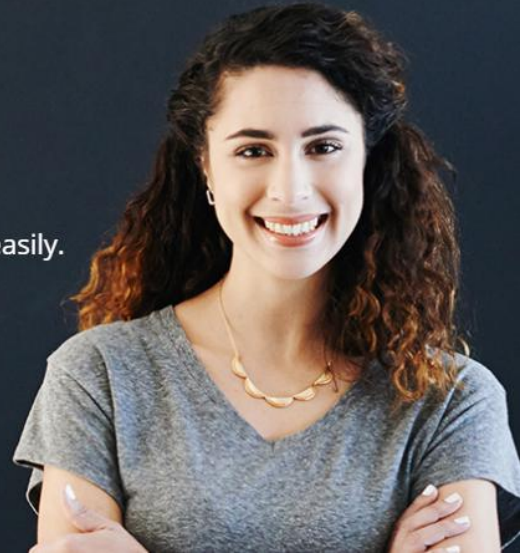


Fast2Test

Pass Your Next Certification Exam Fast!

Everything you need to prepare, learn & pass your certification exam easily.

365 days free updates. First attempt guaranteed success.



Instant Download

After Payment, our system will send you the products you purchase in mailbox in a minute after payment. If not received within 2 hours, please contact us.

365 Days Free Updates

Free update is available within 365 days after your purchase. After 365 days, you will get 50% discounts for updating.



Money Back Guarantee

Full refund if you fail the corresponding exam in 60 days after purchasing. And Free get any another product.

Security & Privacy

We respect customer privacy. We use McAfee's security service to provide you with utmost security for your personal information & peace of mind.

We're not the only ones **happy** about Fast2test Practice Materials ...

62316+ customers in 100+ countries use Fast2test Self Test Engine. Meet our customers.

<https://tw.fast2test.com>

高效的考試材料是最高通過率的考試題庫

Exam : **VCS-274**

Title : Administration of Veritas
NetBackup 7.7

Vendor : Veritas

Version : DEMO

NO.1 A Windows 2008 R2 64-bit client backup job hung. The NetBackup administrator cancelled the job in the Administration Console and restarted the NetBackup Client Service on the client. The administrator initiated another backup of the client, and it also hung.

Which NetBackup client process should be terminated to allow new backups to occur?

- A. bpcd
- B. bpbkar
- C. bpbkar32
- D. bpbkar64

Answer: C

NO.2 Which two storage unit types can be configured in NetBackup? (Select two.)

- A. deduplication
- B. NDMP
- C. robot
- D. media manager
- E. tape

Answer: B, D

NO.3 Which NetBackup 7.7 command is used to report the potential free space of AdvancedDisk storage units?

- A. nbdevquery
- B. nbdevconfig
- C. nbemmcmd
- D. bpstsinfo

Answer: A

NO.4 What is the default length of time that true image restore (TIR) information is retained in the NetBackup catalog?

- A. 1 day
- B. 3 days
- C. 28 days
- D. 30 days

Answer: A

NO.5 Which configuration file should an administrator modify to enable local fingerprint caching on a Netbackup MSDP client?

- A. spa.cfg
- B. pd.cont
- C. contentrouter.cfg
- D. agent.cfg

Answer: B

NO.6 An administrator wants to review the throughput of backup clients to improve performance. Which area of the NetBackup Administration Console displays the throughput of backups for all clients?

- A. Status of Backups

- B. Device Monitor
- C. All Log Entries
- D. Client Backups

Answer: C

NO.7 Which utility should an administrator use to verify tape device configuration?

- A. nbdevquery
- B. tpext
- C. bpmedia
- D. tpconfig

Answer: B

NO.8 A new storage shelf is added to an existing appliance.

Which command under Manage > Storage must the administrator perform first after a new shelf is connected to the appliance and the appliance is powered on?

- A. Add operation to add a new disk
- B. Scan operation to scan for new storage
- C. Resize operation to resize the data partitions
- D. Reset operation to reset the storage

Answer: B

NO.9 Backup jobs to an MSDP storage unit of a large EXT3 file system for a Linux client connected via a 1 GbE network are taking excessive time.

Which two settings should an administrator change to improve the performance of the backups? (Select two.)

- A. enable client-side deduplication
- B. enable multiplexing
- C. enable Use Change Journal for the client
- D. enable Use Accelerator for the policy
- E. enable WAN optimization

Answer: A, D

NO.10 Weekly full backups run for clientA on master1 using a storage unit that belongs to medial.

The administrator is required to retain clientA's full backups for a period of four months. When the administrator modifies the Full schedule, four months is missing from the selection list.

Where should the administrator add the four-month retention period under Host Properties?

- A. Master Servers > master1 > Retention Periods
- B. Clients > clientA > Global Attributes
- C. Media Servers > medial > Retention Periods
- D. Master Servers > master1 > Global Attributes

Answer: A

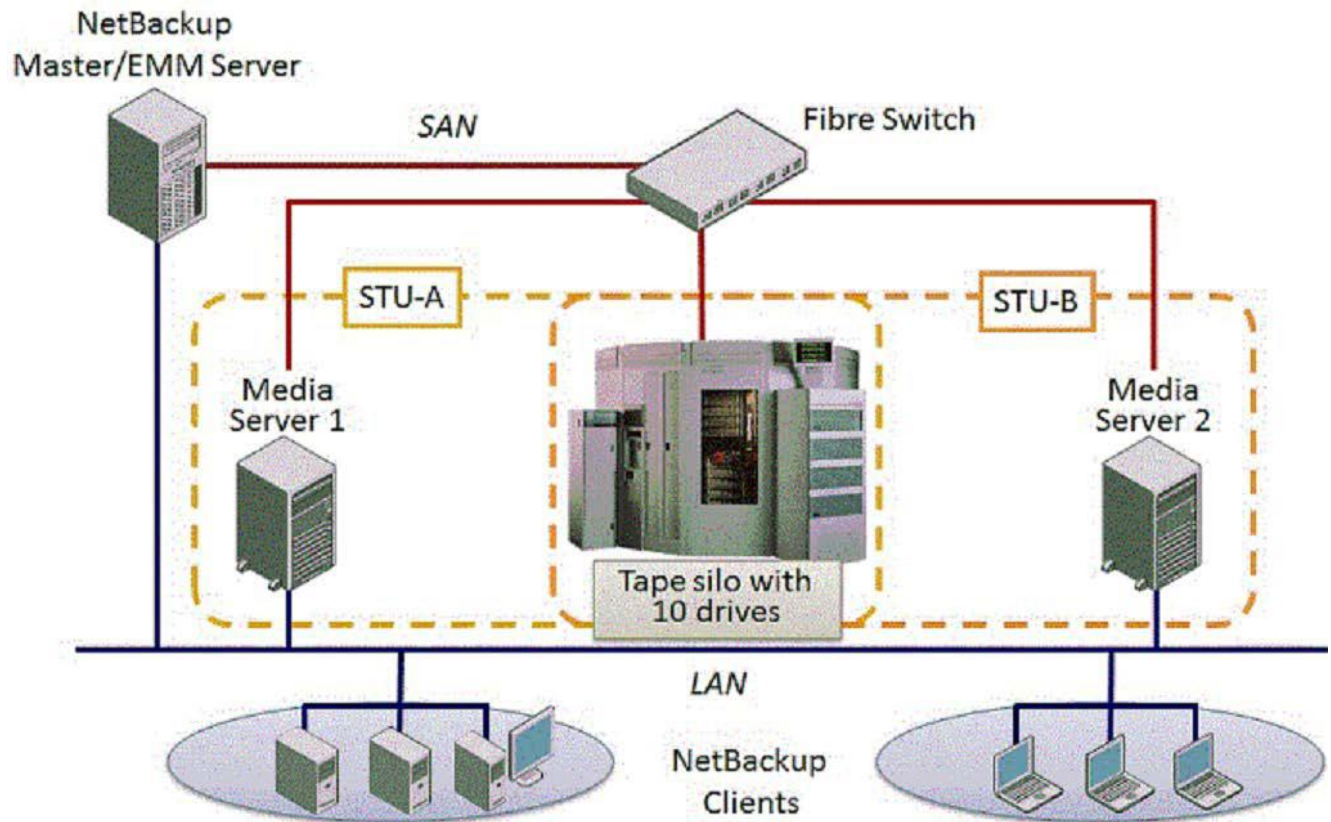
NO.11 Which value under Storage Unit Properties reflects the total amount of space allocated to a basic disk storage unit?

- A. Usable size
- B. Capacity
- C. Raw size

D. Available or Available space

Answer: B

NO.12 Refer to the exhibit.



Two media servers, sharing a library with 10 tape drives, exist in the NetBackup 7.7 environment displayed in the exhibit. Both weekly full and daily differential incremental backups need to run for the clients and each schedule has a different retention period. Because of network topology, some clients back up to Media Server 1 and some back up to Media Server 2. The environment suffers from multiple status failures during the backup window.

How can the administrator minimize the number of failures?

- A. increase the Media unmount delay
- B. configure media multiplexing
- C. enable backups to span tape media
- D. enable media sharing

Answer: D